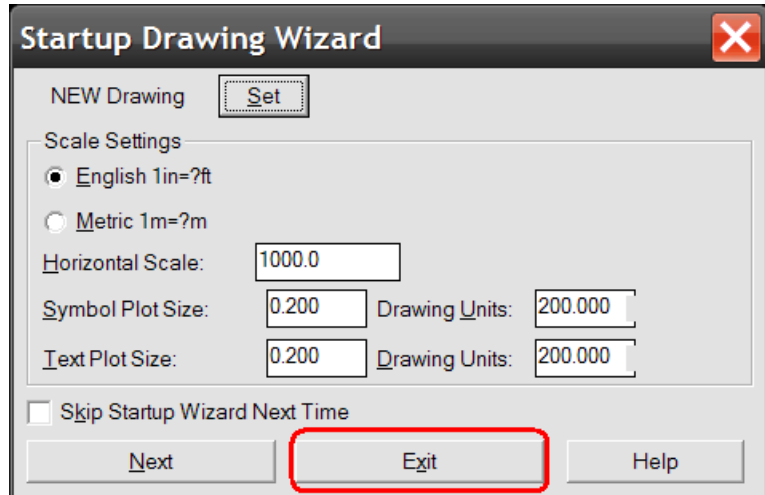
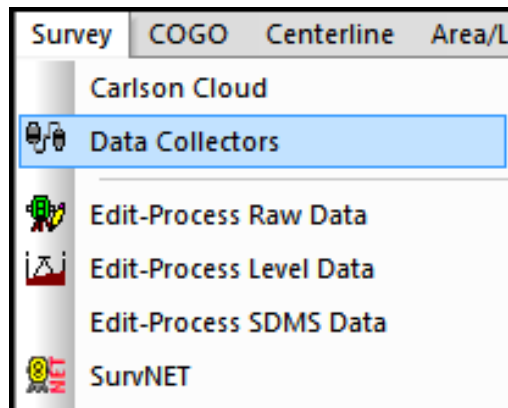


Part 1: Creating the Geoid

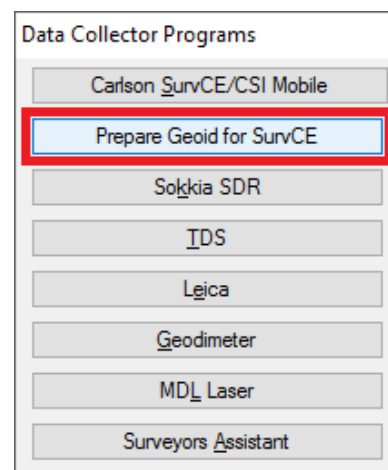
1. Open your Carlson desktop software program, and exit the Startup Drawing Wizard (if it launches).



2. Click on the Survey drop-down and select Data Collectors.

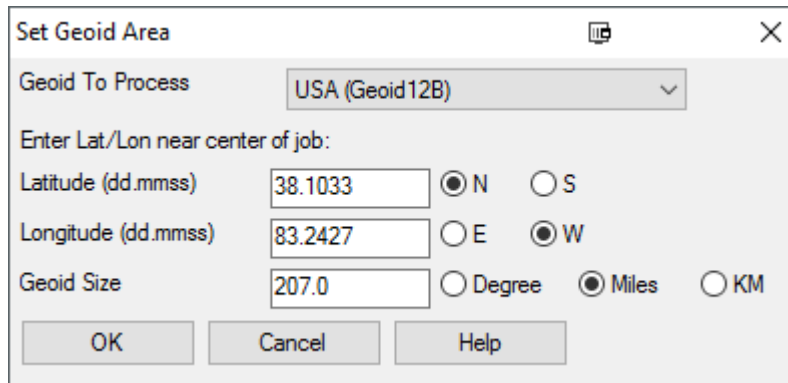


3. Select "Prepare Geoid for SurvCE".



- The Set Geoid Area dialogue box will require that you choose your Geoid to process, and set the Latitude and Longitude of the area in which you will be working.

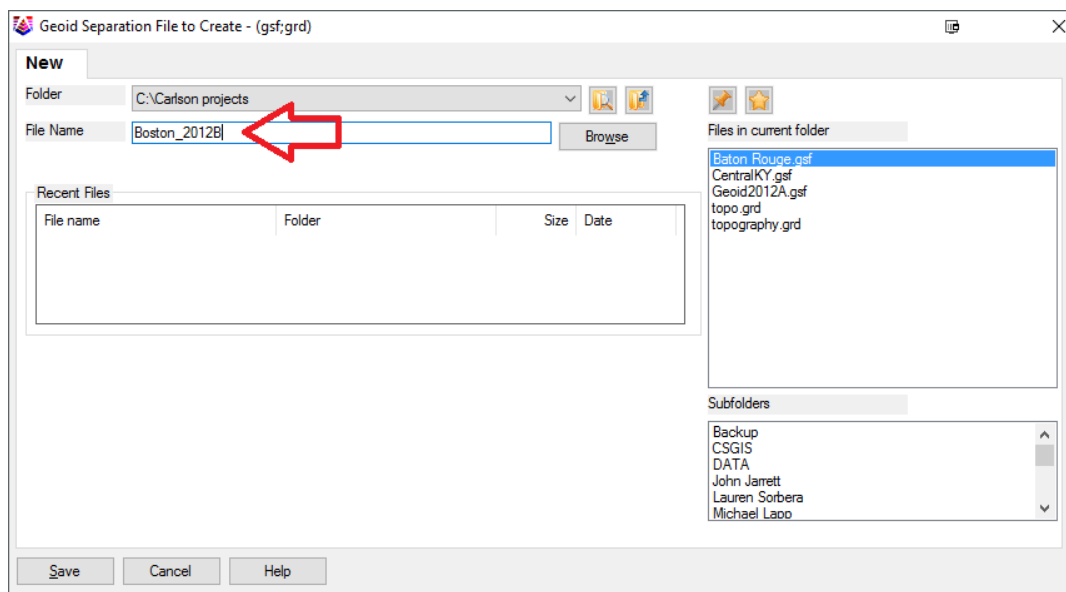
We recommend making the size 120 miles or 2 degrees {this will create a Geoid file with a 50mile Radius however we do allow up to 250 miles in size for a 125-mile radius}.



The 'Set Geoid Area' dialog box contains the following fields and options:

- Geoid To Process: USA (Geoid12B)
- Enter Lat/Lon near center of job:
 - Latitude (dd.mmss): 38.1033, with radio buttons for N (selected) and S.
 - Longitude (dd.mmss): 83.2427, with radio buttons for E and W (selected).
- Geoid Size: 207.0, with radio buttons for Degree, Miles (selected), and KM.
- Buttons: OK, Cancel, Help.

- When prompted to name your Geoid file, please make sure to type in a unique geoid name, which relates to the location which the geoid's Lat/Long is centered on. For example, the City Name and 2012B for the Geoid model {i.e. - Boston_MA2012B or Maysville_2012B}.



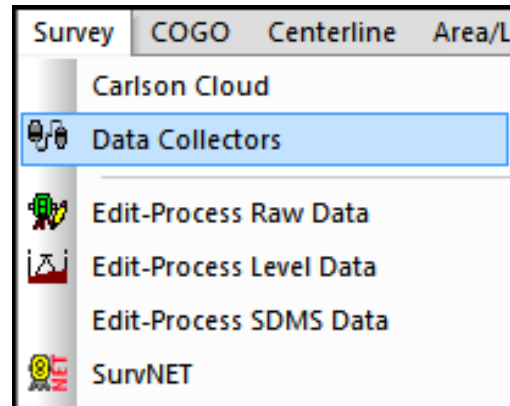
The 'Geoid Separation File to Create' dialog box shows the following details:

- Folder: C:\Carlson projects
- File Name: Boston_2012B (highlighted with a red arrow)
- Files in current folder: Baton Rouge.gsf, CentralKY.gsf, Geoid2012A.gsf, topo.grd, topography.grd
- Subfolders: Backup, CSGIS, DATA, John Jarrett, Lauren Sorbera, Michael Laop
- Buttons: Save, Cancel, Help.

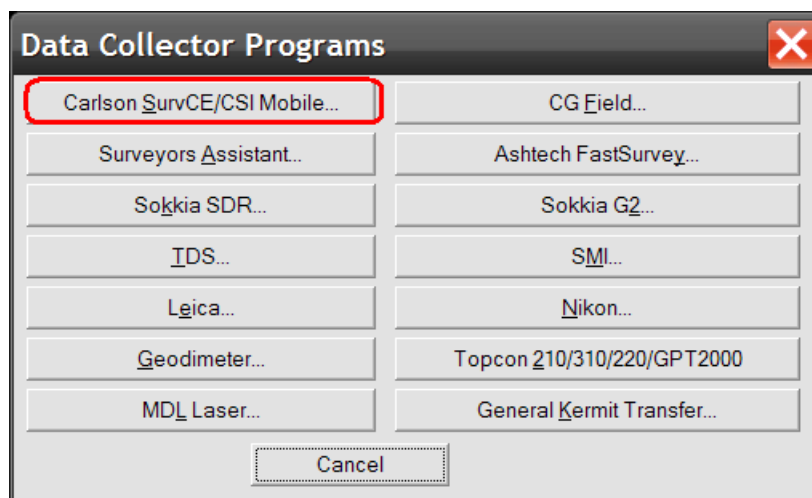
You may now use the data transfer routine in Carlson Survey, to transfer your geoid to your data collector.

Part 2: Downloading Your Data To Carlson Desktop Software

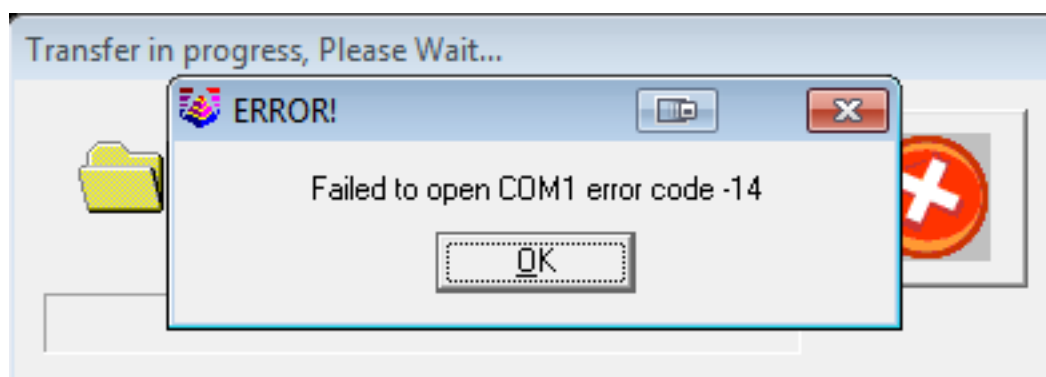
1. Click on the Survey drop-down and select Data Collectors.



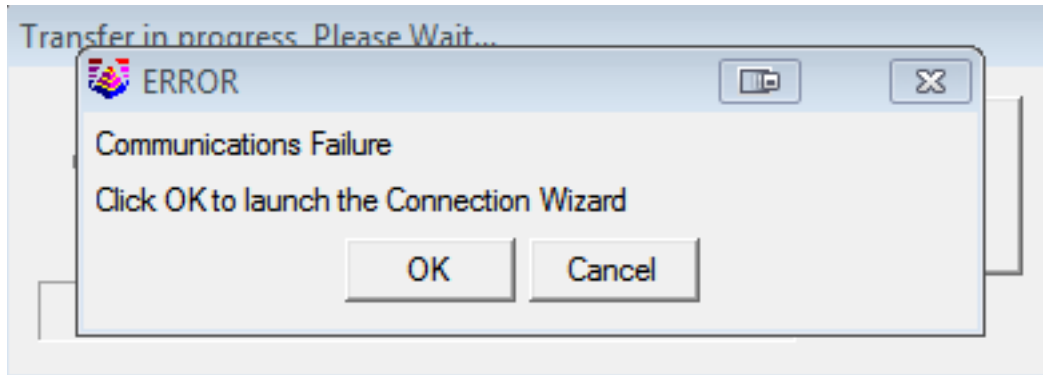
2. Select “Carlson SurvCE/CSI Mobile” as your data collector connection.



3. You may receive a communication failure message, initially. Click, OK to continue.



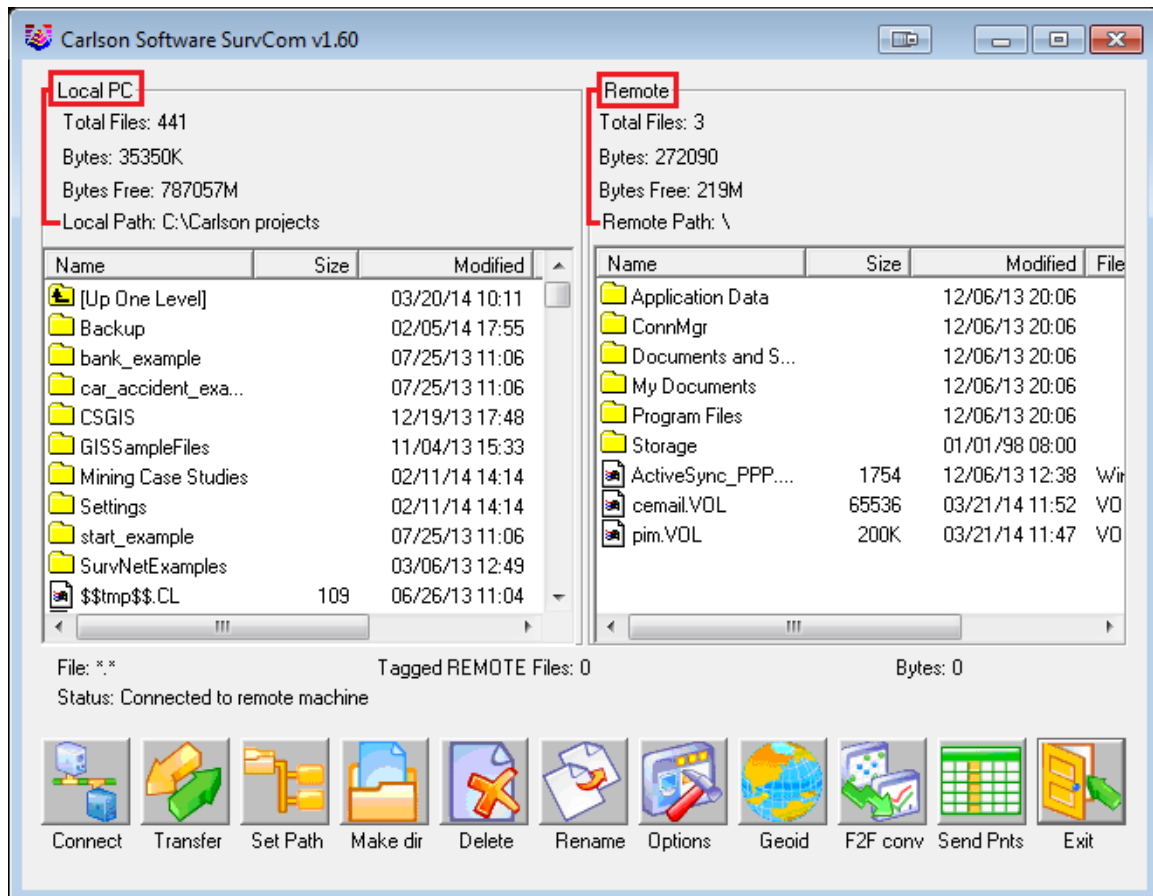
4. You will be prompted to “launch the Connection Wizard.” Please, click OK.






5. Click on the USB icon to allow the Connection Wizard to connect to your device.

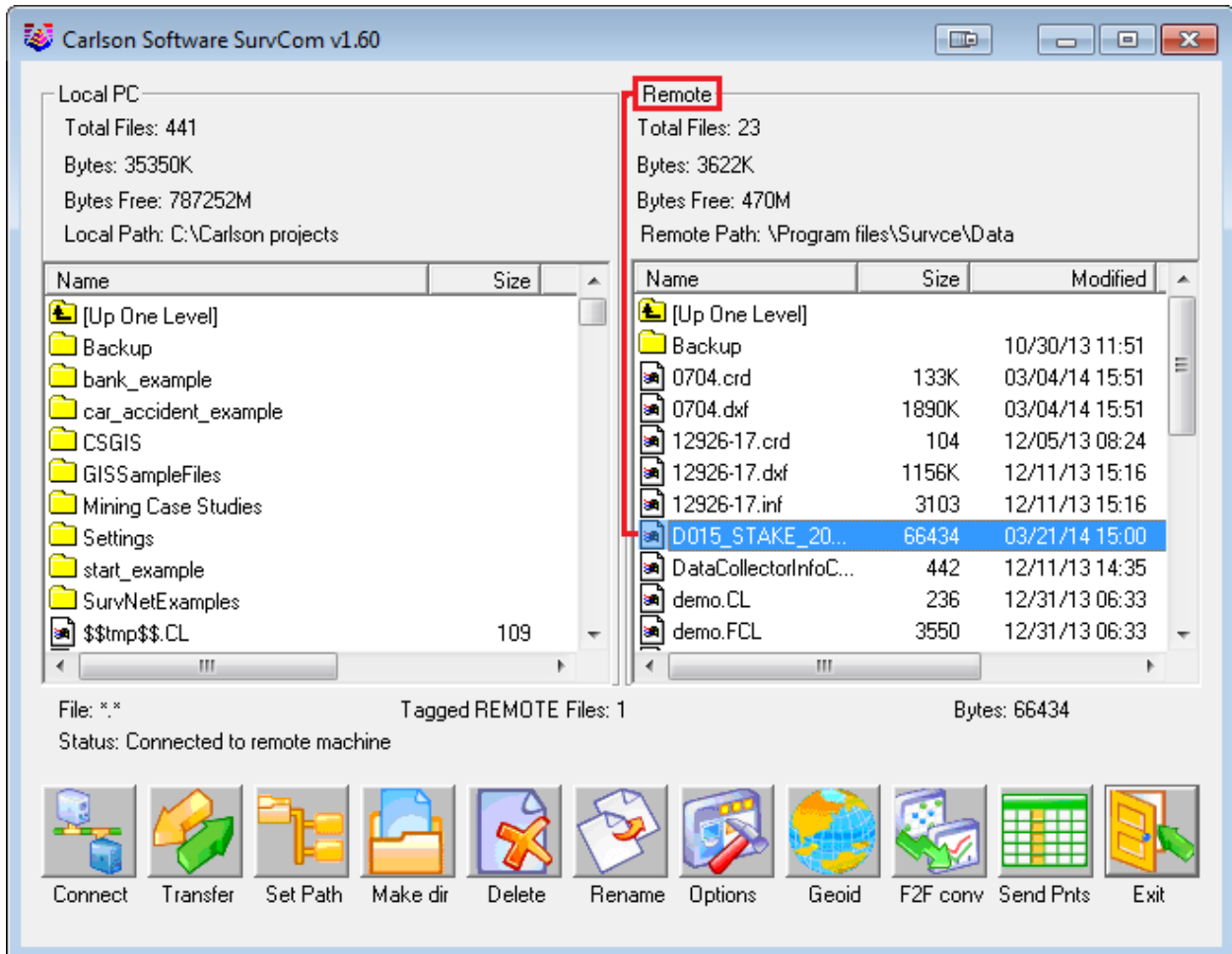


6. The SurvCom window is divided into two panes. Each window pane shows where the program is currently looking at data. This is referred to as the Data Path. The Local Path displays the data on your PC on the left-hand side. The Remote Path displays data in your data collector on the right-hand side. The Remote path should always be set to the DATA folder, of your data collector.

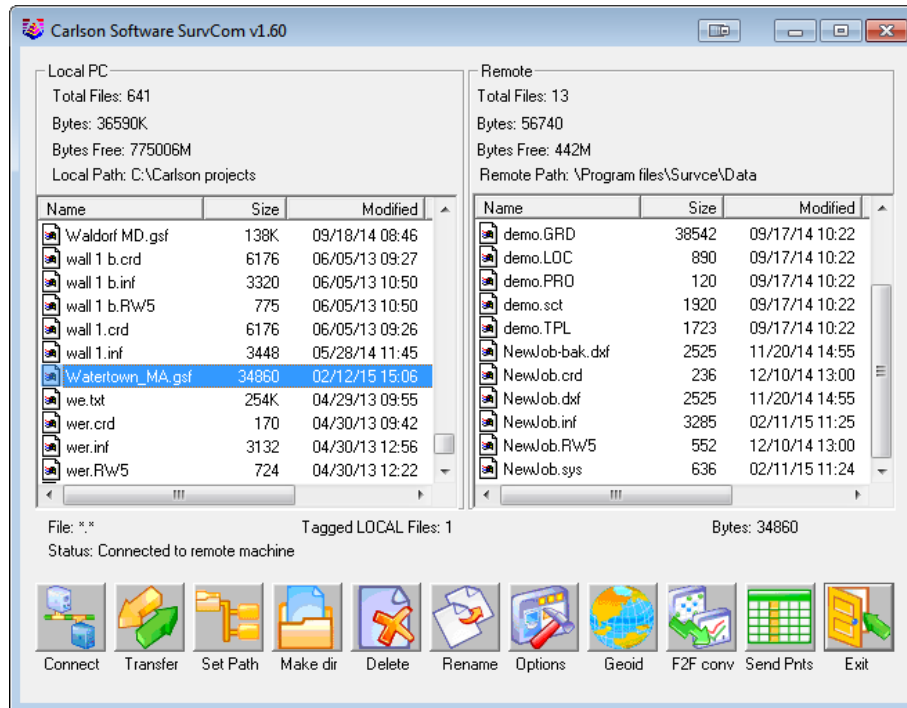


To set the path to the data folder: First, double-click on  Program Files
Then, double-click on  SurvCE
Then, double-click on  Data

7. Browse to the .gsf file, that you wish to transfer. Then, double-click on the file name to transfer it.



The file will automatically transfer to the path (folder) specified under the heading of Remote, on the right-hand side.



A message will be shown, telling you that the file was transferred successfully to your data collector and the .GSF can now be found in the Remote pane of the SurvCom window.

Part 3: Loading the Geoid File In SurvCE

1. On the data collector go to the Equip tab / Tap Localization / tap the GPS tab / tap "Geoid File" button / select the file we just created / Tap OK / Tap OK

